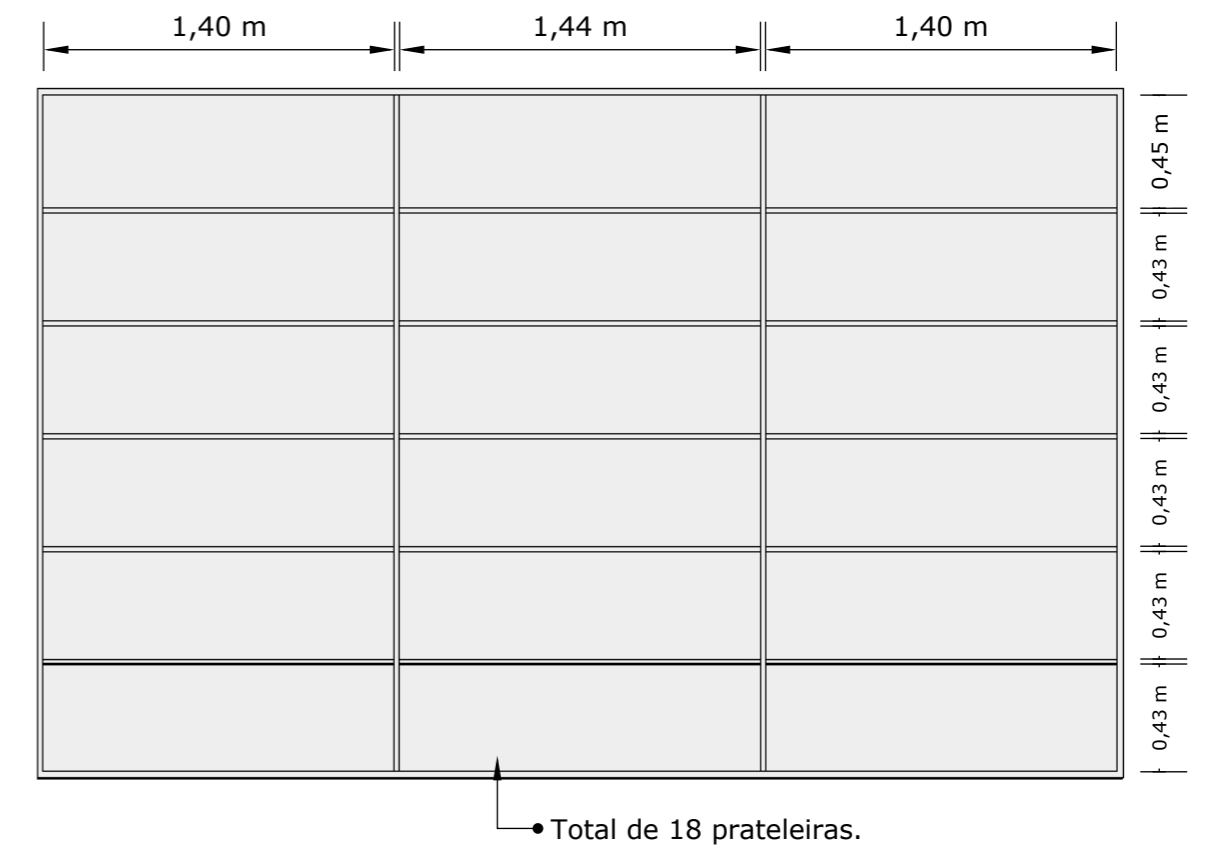
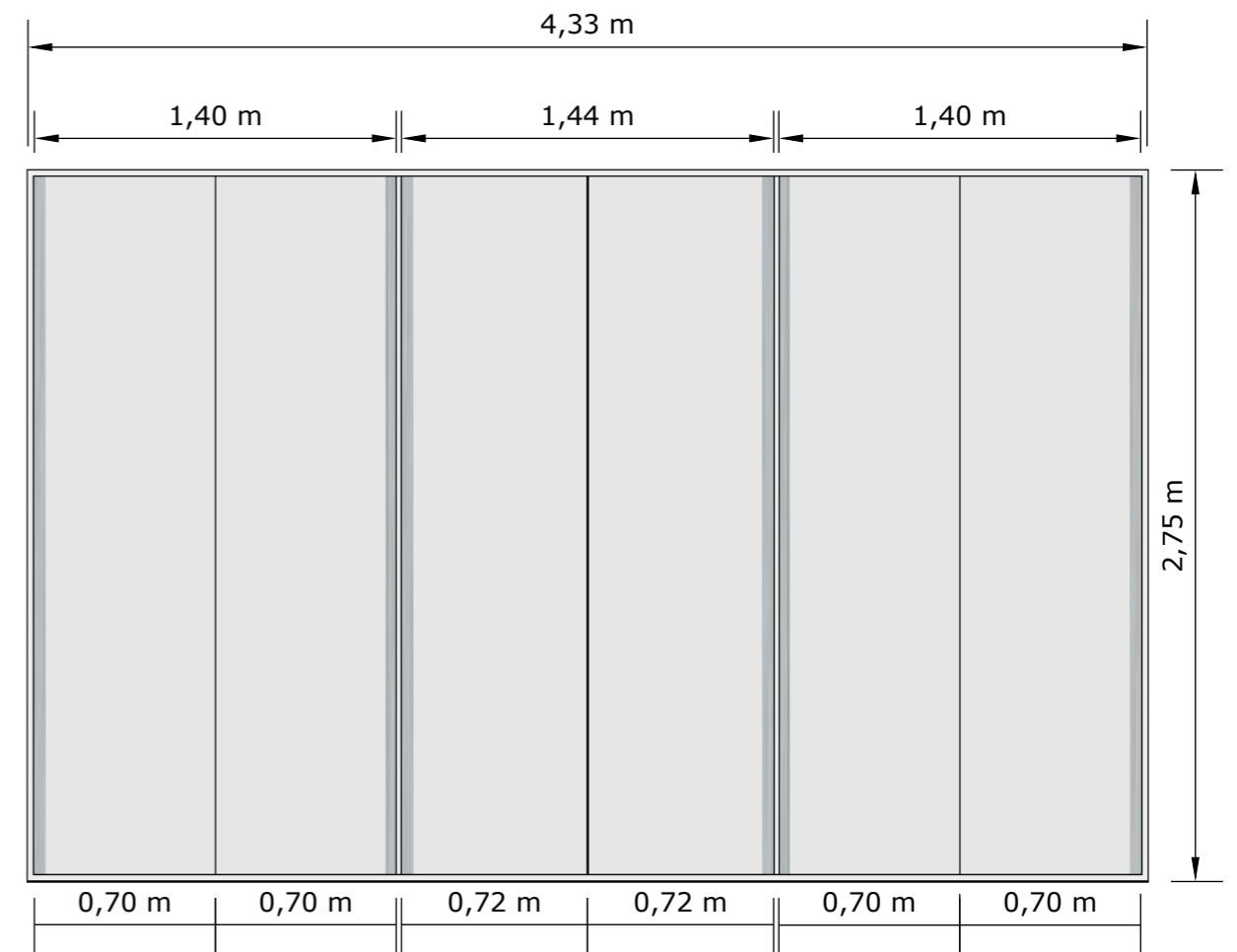
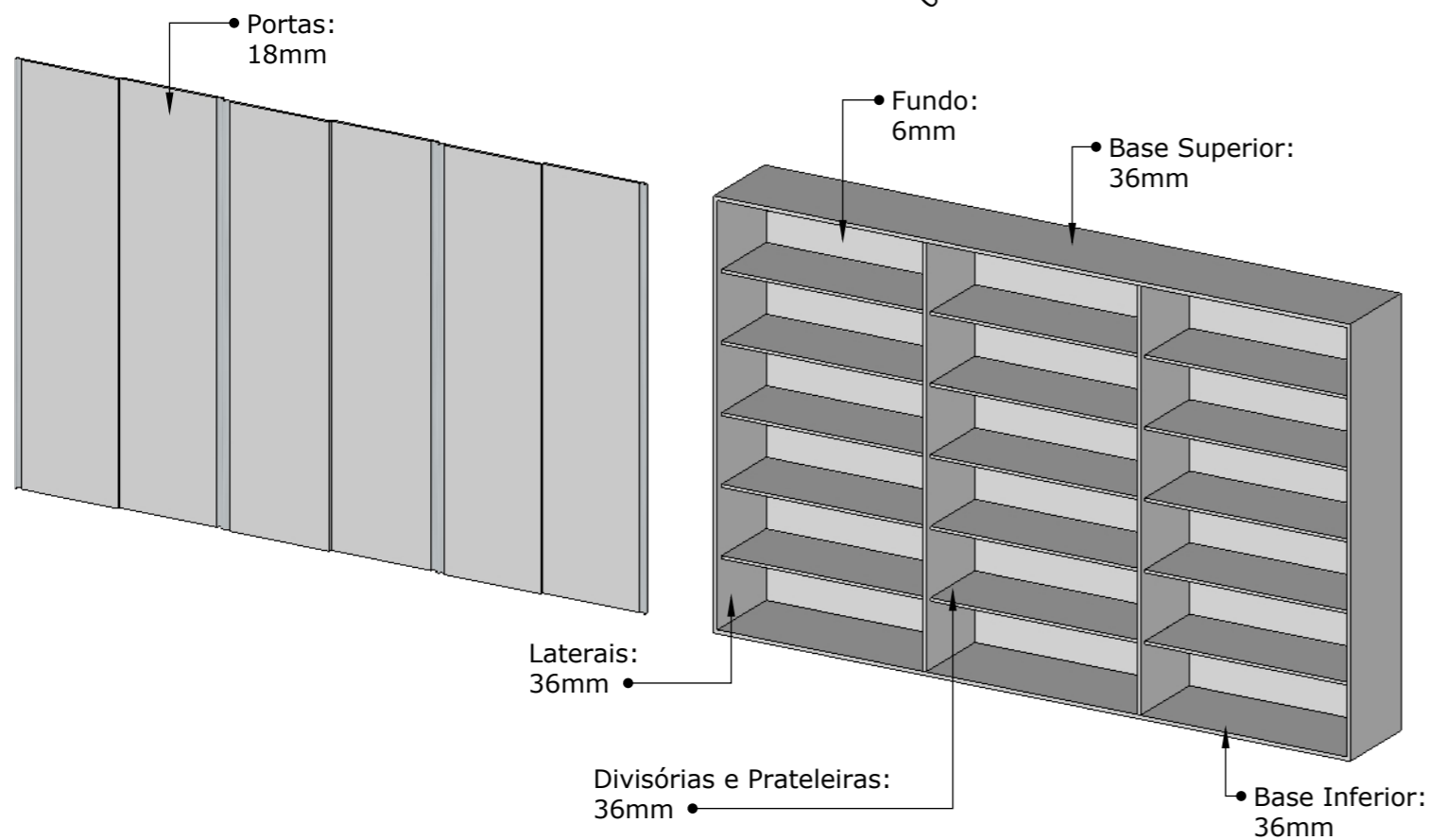
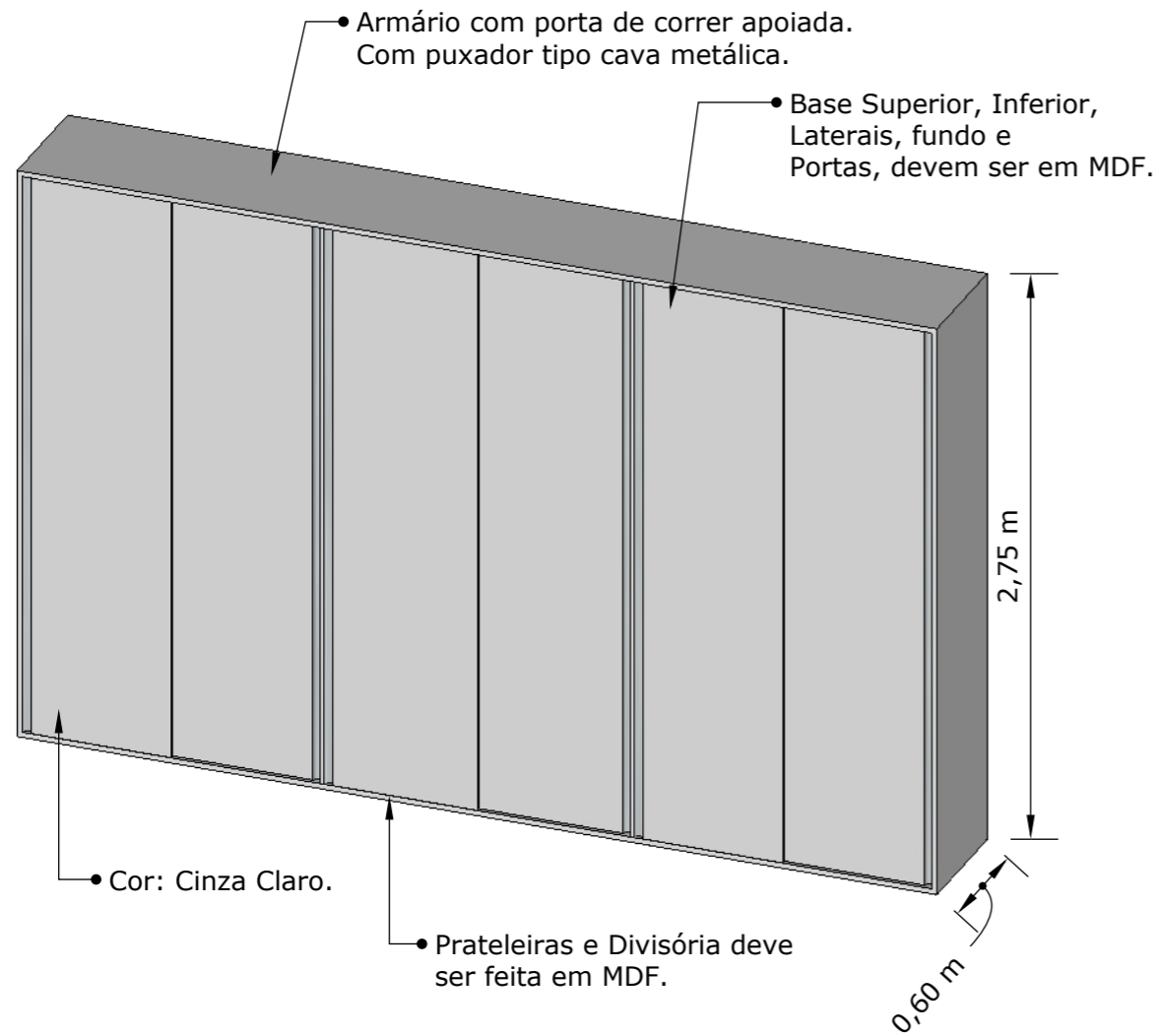


# ARMÁRIO

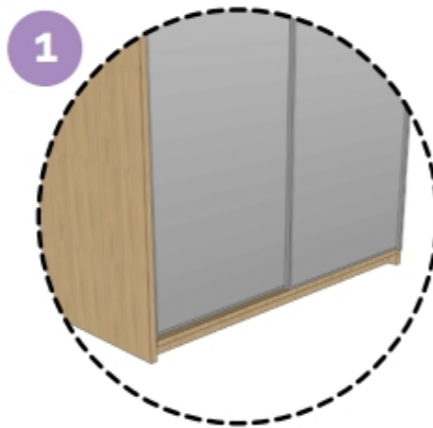
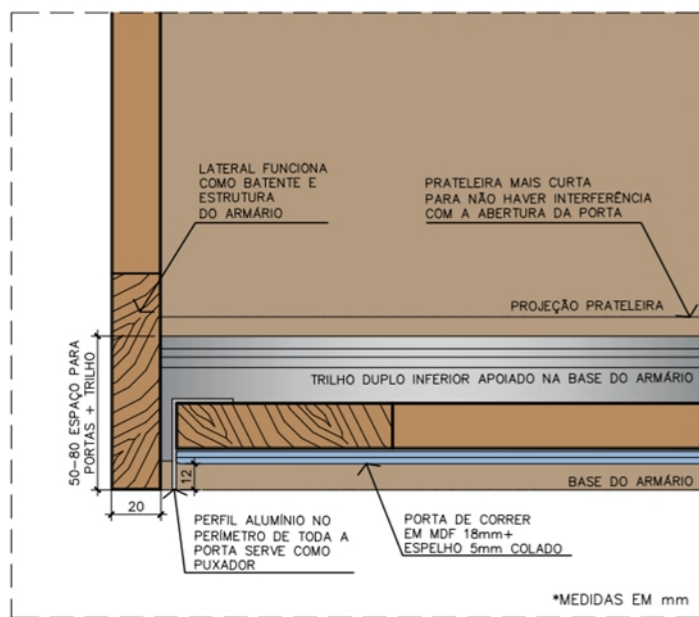
## MATERIAL



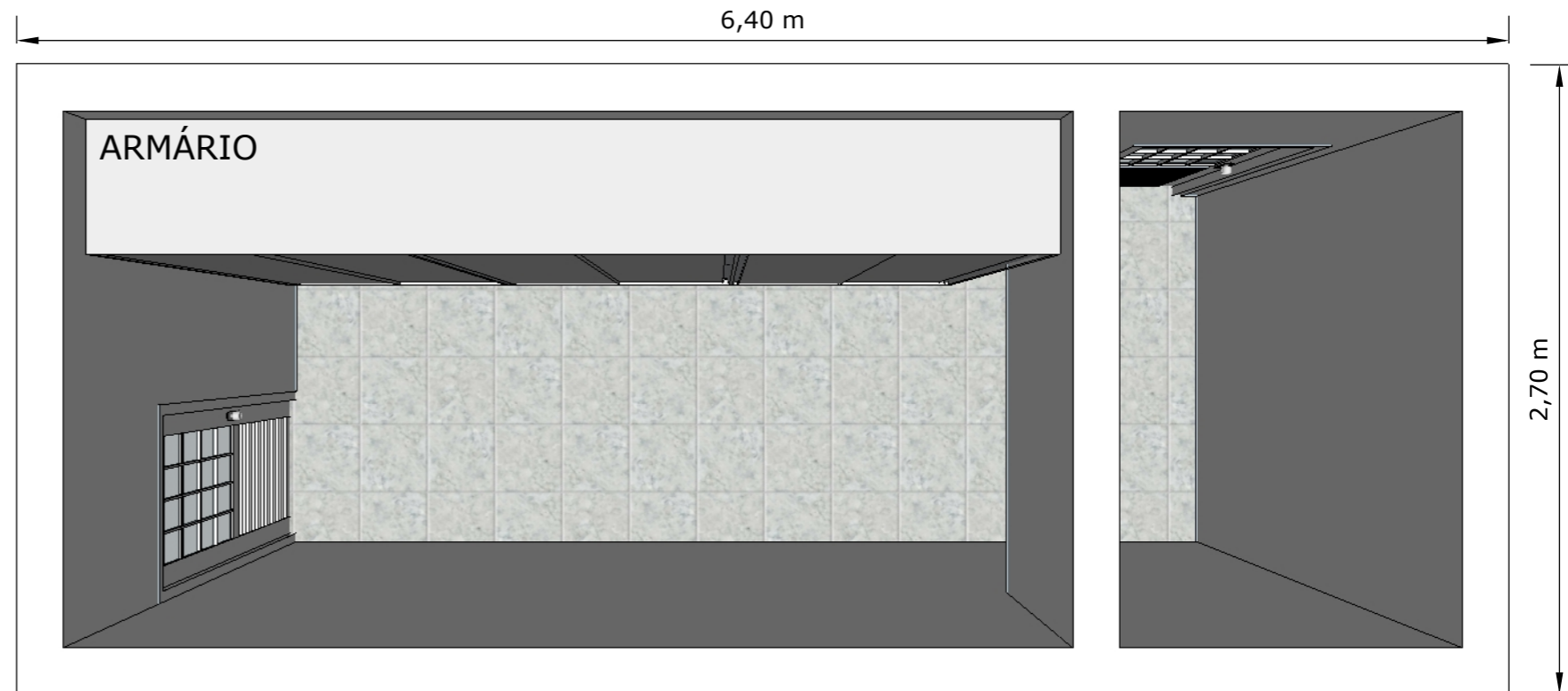
MDF



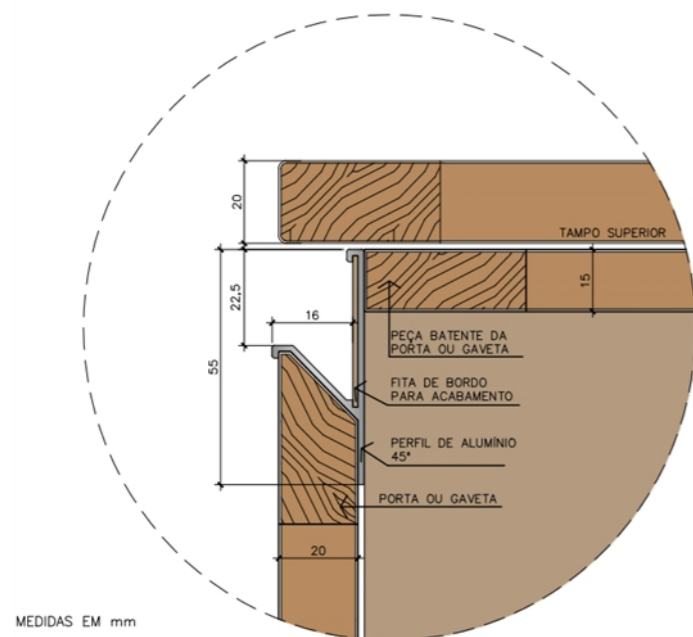
## PORTA DE CORRER



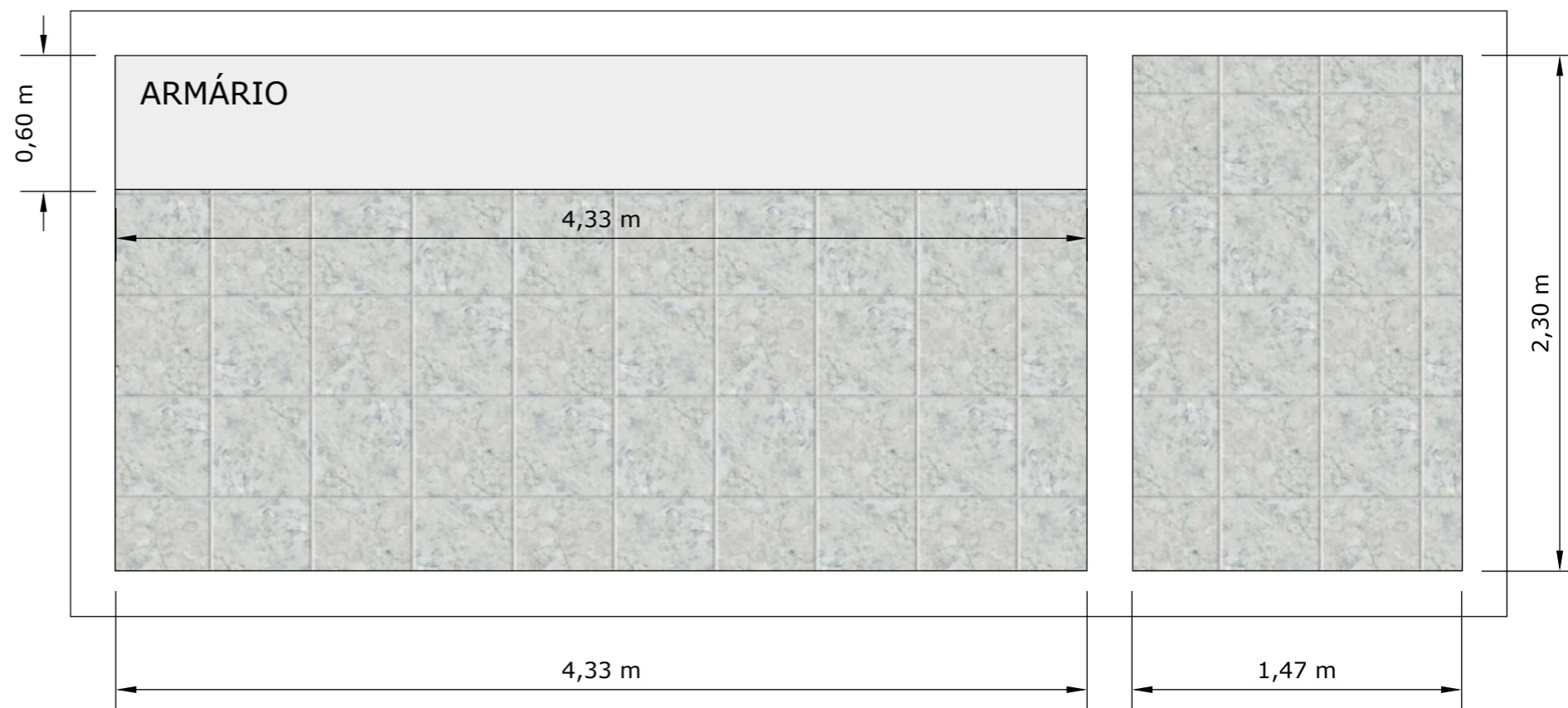
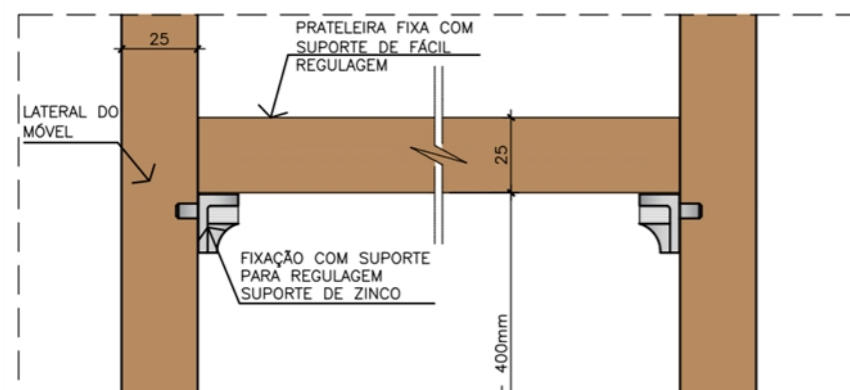
APOIADA



## PUXADOR TIPO CAVA



## FIXAÇÃO PRATELEIRAS



## PLANTAS

DETALHAMENTO ARMÁRIOS PARA ESCOLA EMEB "GOVERNADOR MÁRIO COVAS"

FOLHA 2/2



LOCAL: EMEB "ROMUALDO DE SOUZA BRITO"

DEPARTAMENTO: EDUCAÇÃO

DIRIGENTE: PRISCILA AP. PEREIRA

DESENHO: MARIA ISADORA C. TONON

PROJETO  
MARIA ISADORA COMPRI TONON